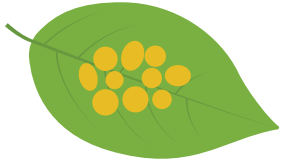
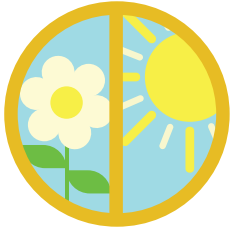


# The BK Collection

Solve the word problems below by using the information to draw out the problem. Please show your work.



Ladybug Kelly laid 10 eggs. Three of the eggs were female. How many male eggs did she lay?



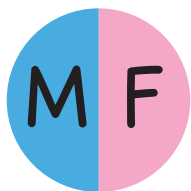
Ladybug Lisa laid 16 eggs during the spring and 11 eggs during the summer. How many total eggs did she lay?



Ladybug Morgan laid eggs under two leaves. Under one leaf, she laid 22 eggs. Under the other leaf, she laid 26 eggs. How many more eggs are there under the second leaf?



Ladybug Sue laid 10 rows of eggs with 4 eggs in each row. How many eggs did she lay in total?



Ladybug Jan laid 18 eggs. Half of them were females and half were males. How many were there of each?



There are 5 rows of eggs with 12 eggs in each of them. How many eggs are there in total?